

The UK Experience of deliberation



PEOPLE
AT THE
HEART OF
DECISION-
MAKING

Additional Funding

- In a decision was taken out of the social care budget between 2010 and 2015 (A3ASS Budget Survey 2015).
- The additional £2 billion in extra funding announced in the Spring 2017 Budget, while welcome, fails to cover the shortfall in funding for the sector. Additionally, the tapered nature of the extra funding only postpones this impending crisis, as it does not deliver a long term funding solution.
- The extra funding is being made available through the Government's announcement to allow Local Authorities to raise the hypothecated Social Care Council Tax Precept from 20 to 25 in the next two years. However, this increase will not raise enough funds to cover the current shortfall in funding, including when the extra funding from the central government is received.

Additional Funding

- In a decision was taken out of the social care budget between 2010 and 2015 (A3ASS Budget Survey 2015).
- The additional £2 billion in extra funding announced in the Spring 2017 Budget, while welcome, fails to cover the shortfall in funding for the sector. Additionally, the tapered nature of the extra funding only postpones this impending crisis, as it does not deliver a long term funding solution.
- The extra funding is being made available through the Government's announcement to allow Local Authorities to raise the hypothecated Social Care Council Tax Precept from 20 to 25 in the next two years. However, this increase will not raise enough funds to cover the current shortfall in funding, including when the extra funding from the central government is received.

What will I cover?

- Some theory and some definitions
- Three things to think about when commissioning
- Two case studies

Some theory

The spectrum of engagement



Number of people involved

Some definitions

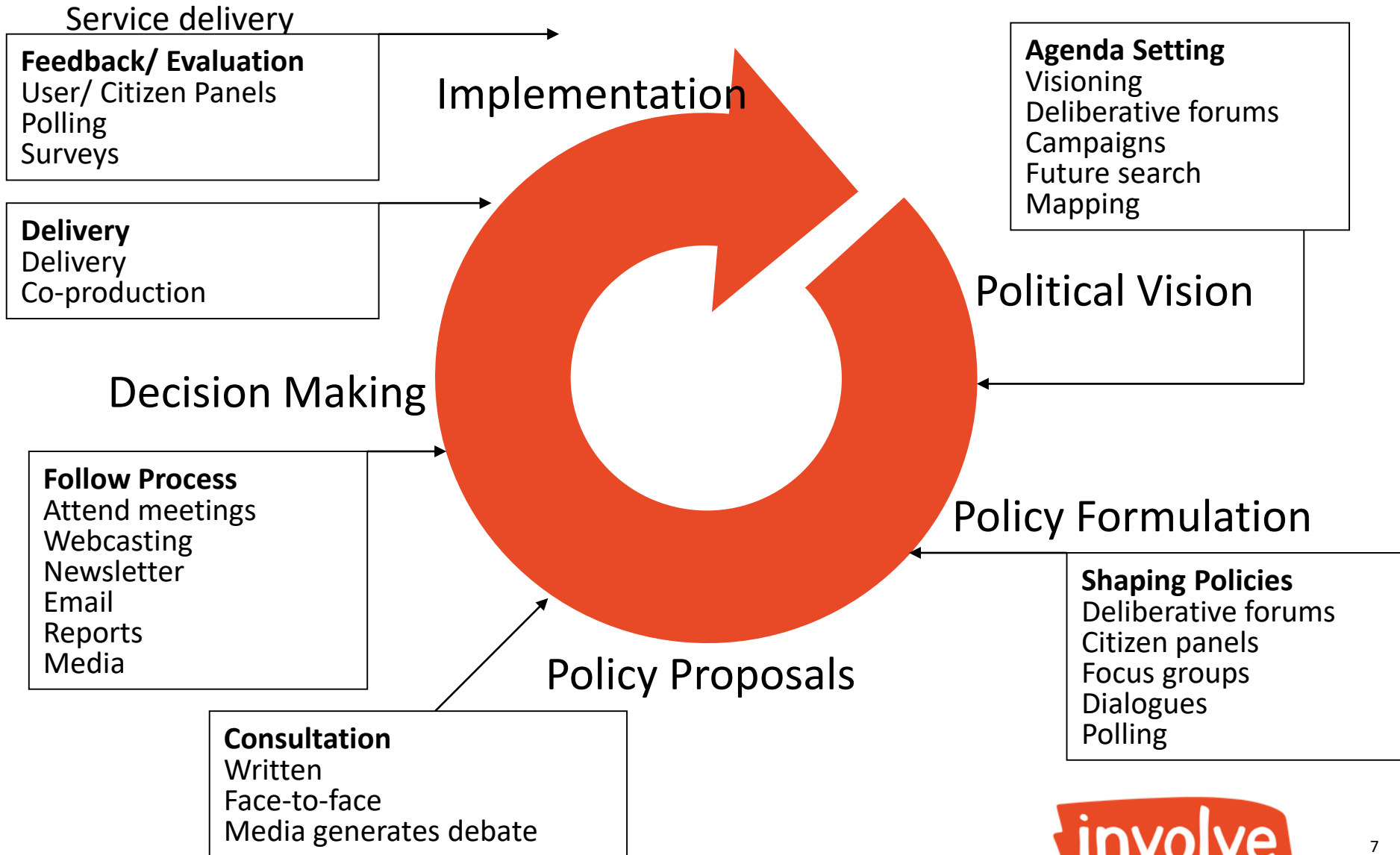
	Inform	Consult	Engage	Coproduce	Empower
Participation goal	To provide the public with balanced and objective information to assist them in understanding the problem, alternatives, opportunities and/or solutions.	To obtain public feedback on analysis, alternatives and/or decisions.	To work directly with the public throughout the process to ensure that public concerns and aspirations are consistently understood and considered.	To partner with the public in each aspect of the decision including the development of alternatives and the identification of the preferred solution.	To place final decision making in the hands of the public.
Promise to public	We will keep you informed .	We will keep you informed, listen to and acknowledge concerns and aspirations, and provide feedback on how public input influenced the decision.	We will work with you to ensure that your concerns and aspirations are directly reflected in the alternatives developed and provide feedback on how public input influenced the decision.	We will look to you for advice and innovation in formulating solutions and incorporate your advice and recommendations into the decisions to the maximum extent possible.	We will implement what you decide.

Source:

[https://www.iap2.org.au/Tenant/C0000004/00000001/files/IAP2_Pub](https://www.iap2.org.au/Tenant/C0000004/00000001/files/IAP2_Public_Participation_Spectrum.pdf)

lic Participation Spectrum.pdf

Policy Cycle – PE at different points



Three more things
to think about

The Public Engagement Triangle

Transmit

To inspire, inform, change, educate, build capacity and involvement or influence decisions of others (eg public).

Receive

To use views, skills, experience, knowledge of others (eg public) to inspire, inform, change, educate or build your own capacity or decisions

Collaborate

To collaborate, consider, create or decide something together (public).

Colbourne, L. (2010) Science for All Conversational Tool (BIS)

Who are the public?

Wider civil society

Interested in an issue unrelated to specific policy decision. Members of the public engaged as supporters, activists etc.

Stakeholders

Have specific interest and knowledge about the issue. Lobbying government for changes to policy/ law

The public

Members of public engaged as individuals at home, in the work place or through citizens' assemblies etc

Public engagement is a process

It is a process which runs from:

1. deciding to open up policy or decision-making to wider participation
 - **the why**
2. through finding effective ways of engaging with the public and dealing with the information
 - **the how**
3. to linking the outcomes of these activities to democratic and/or organisational decision-making processes
 - **the difference made**

Two case studies

CASE STUDY: PUBLIC DIALOGUE MITOCHONDRIAL TRANSFER

- Commissioned by HFEA* and Sciencewise
- 90 citizens
- Supported change in law with some caveats

* Human Fertilisation and Embryology Authority

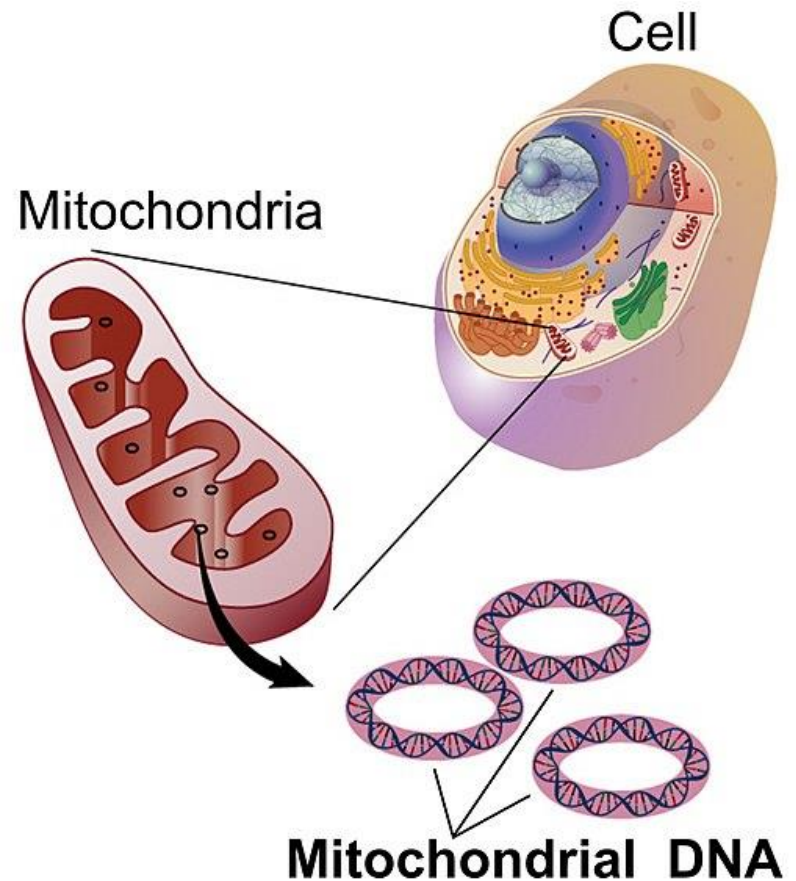


Photo credit: National Human Genome Research Institute [Public domain]

CASE STUDY: CITIZENS' ASSEMBLY ON SOCIAL CARE

- Commissioned by 2 select committees
- 47 citizens
- Recommendations on funding mix

CITIZENS' ASSEMBLY ON SOCIAL CARE

RECOMMENDATIONS FOR FUNDING ADULT SOCIAL CARE

June 2018





Simon Burall
Involve Associate
simon@involve.org.uk
[@sburall](https://twitter.com/sburall)